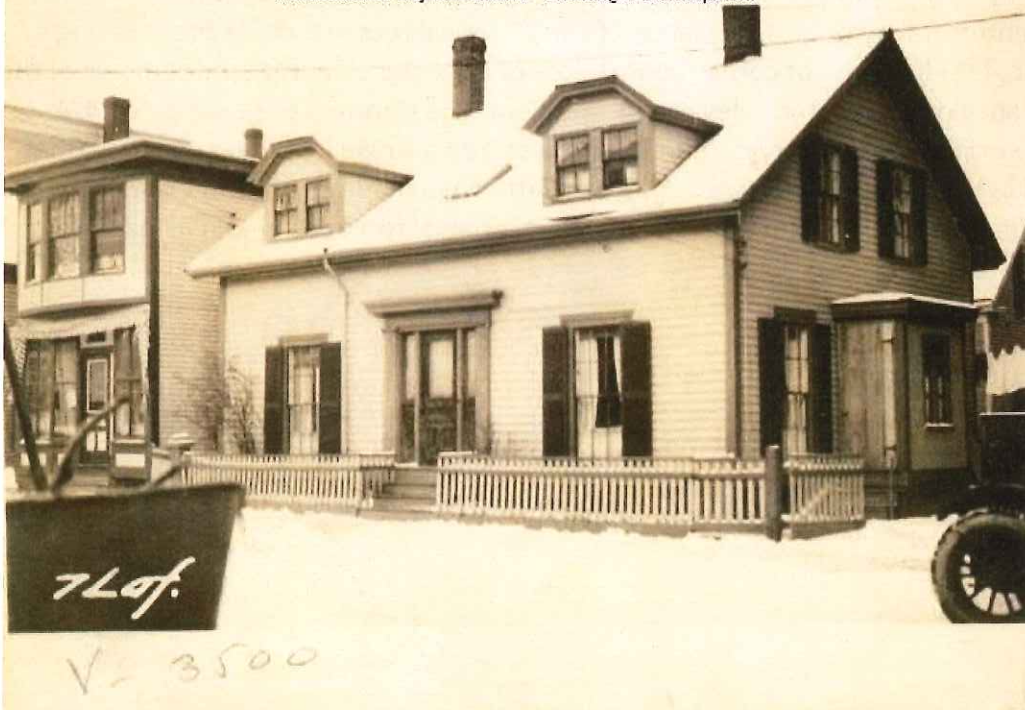


Address: 7 Lafayette Street
Approximate/Documented Date of Building: 1849
Surveyed: 10/11/ 2019
Historic Name: Henry Rowe House
Classification: Individually-Designated Landmark



www.maine-memory.net/item/60360
Collections of City of Portland - Planning & Development



Introduction

7 Lafayette Street is an excellent example of a one-and-a-half-story side-gable cape built in the mid-nineteenth century. It is one of the few buildings that has survived from the early settlement of Munjoy Hill. The dwelling boasts several distinctive elements, including a Greek Revival door surround and jerkinhead dormer windows over the façade. Though the building has retained some alterations in its 170 years, it has retained a high level of period detail. The three-by-two-bay dwelling has cedar shingle siding and replacement 6/6 double hung sash windows.

The façade is symmetrical, with the main entry in the center bay. The replacement single entry door is flanked by sidelights over panels and sits within a prominent Greek Revival surround. The two jerkinhead dormers over the façade each boast a pair of 6/6 sash windows with wooden trim. Unlike the rest of the dwelling's exterior, the dormers have wood clapboard siding. A skylight, which has been present since at least 1924, sits between the two dormers.

The eastern elevation features a projecting bay where a vestibule secondary entrance and window once stood. The asphalt roof exhibits a single brick chimney over the peak behind the western dormer. A shed dormer on the rear roof is not visible from the road.

Henry Rowe (1812-1870) was an Irish architect who immigrated to the United States circa 1840. He set up a shop in Portland in 1845 after working in Boston and New York. He specialized in Gothic Revival architecture and the Portland Directory shows he resided at 7 Lafayette in 1869.

Additions and Alterations Since 1924

7 Lafayette Street has retained several features or been restored to match the 1924 historical record in many ways. The main entry surround, dormer windows, and overall form of the house reflect its nineteenth-century origins. Deviations from historical record include the dwelling's current cedar shingle siding, loss of corner boards, loss of a second chimney, and removal of the window and entrance on the eastern elevation's first floor. The dormers once exhibited 4/4 windows, and the original main entry door originally featured a single light over panels, rather than two vertical lights. The current owners of 7 Lafayette have made significant efforts to restore architectural elements of the house to match its original form and retain its earlier character.